

EXTERNAL SOUND UNITS

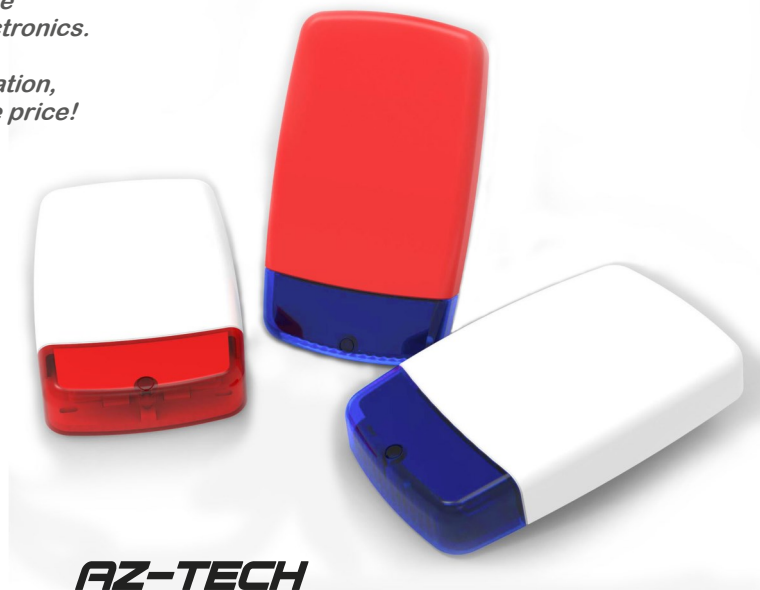
The **AZ-TECH** range of External Sound Units offer the ultimate in aesthetic ultra low profile design and microprocessor electronics.

Designed by **KINETIC** they provide a comprehensive specification, premium quality, performance and reliability at an affordable price!

Outstanding Features:

- Fully integrated External Sound and Strobe units
- Ultra low profile CAD Design & aesthetic appearance
- Single or Twin Sounders - up to 118 Db Sound Output
- Polycarbonate construction throughout
- Sealed Electronics for weather resistance
- On board high intensity Xenon strobe flasher
- Twin alternating 'comfort' LED's
- Lid and Wall Micro switch anti-tamper mechanism
- On board SAB / SCB Selectable
- EN50131 compliant to Grade 2 or above on most models

NB: Certain features are Model Dependent - see below



AZ-TECH
External Sound Units

Construction:

3mm polycarbonate construction for strength and durability with UV adjustment to prevent discolouration due to sunlight exposure

Sealed Electronics:

The electronics are conformally coated and encapsulated within a gasket sealed weather resistant & impact resistant PCB cover.

Engineer Hold Off:

Engineer Hold Off and 5 second Test feature to allow testing of the unit during installation without triggering full alarm mode

Compliance:

Comply with EN50131-4 Security Grade 3 Environmental class IV * (* Model dependent)

Screen Printing:

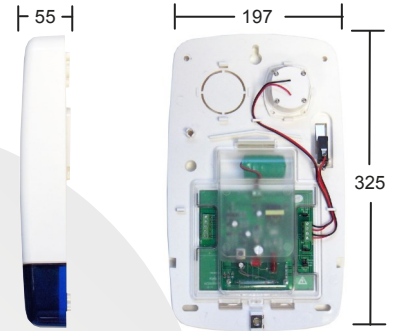
We offer this service on a minimum order Quantity of 36 pcs

Colour Options:

Covers:
Lenses:

Warranty:

2 Years from date of purchase



Dimensions in mm

SPECIFICATION	AZ-TECH AZ-120	AZ-TECH AZ-220	AZ-TECH AZ-320	AZ-TECH DUMMY
Sound Output @ 1M	Max 115dB	Max 115dB	Max 118dB	N/A
Sounder Type	Single Piezo	Single Piezo	Twin Piezo	N/A
Strobe Xenon tube	90 flashes / min	90 flashes / min	90 flashes / min	N/A
Battery (On-board)	N/A	6.0 volt NiMH	7.2 volt NiMH	1x D Cell (optional)
Indication	Twin LED	Twin LED	Twin LED	1x LED (optional)
Current Consumption	370 mA	370 mA	400 mA	0.02 mA
Timer	Panel determined	--- 15 / 9 minute cut-off + 5 second test ---		N/A
Tamper	Optional extra	--- LID and WALL tamper via microswitch ---		N/A
Construction Cover	3 mm ABS	3mm Polycarb.	3mm Polycarb.	3mm ABS
Back plate	3 mm ABS	3mm ABS	3mm Polycarb.	3mm ABS
PCB Cover	N/A	ABS	Polycarb.	N/A
SAB / SCB Selectable	N/A	YES	YES	N/A
Dimensions	325 x 197 x 55mm	325 x 197 x 55mm	325 x 197 x 55mm	325 x 197 x 55m
Security Grade/ Class	1 / IV	2 / IV	3 / IV	N/A

