

Specification

Nominal Voltage	12V	
Nominal Capacity(20HR)	38.0AH	
Dimension	Length	197±2mm (7.76 inches)
	Width	165±2mm (6.50 inches)
	Container Height	170±2mm (6.69 inches)
	Total Height (with Terminal)	170±2mm (6.69 inches)
Approx Weight	Approx 13.5 kg (29.77lbs)	
Terminal	T6	
Container Material	ABS	
Rated Capacity	38.0 AH/1.90A	(20hr, 1.80V/cell, 25°C/77°F)
	35.0AH/3.50A	(10hr, 1.80V/cell, 25°C/77°F)
	30.7 AH/6.14A	(5hr, 1.75V/cell, 25°C/77°F)
	27.1 AH/9.02A	(3hr, 1.75V/cell, 25°C/77°F)
	22.5 AH/22.5A	(1hr, 1.60V/cell, 25°C/77°F)
Max. Discharge Current	380A (5s)	
Internal Resistance	Approx 10.5mΩ	
Operating Temp. Range	Discharge	-20~55°C (-4~131°F)
	Charge	0~40°C (32~104°F)
	Storage	-20~50°C (-4~122°F)
Nominal Operating Temp. Range	25±3°C (77±5°F)	
Cycle Use	Initial Charging Current less than 7.6A. Voltage 14.4V~15.0V at 25°C(77°F)Temp. Coefficient -30mV/°C	
	Standby Use No limit on Initial Charging Current Voltage 13.5V~13.8V at 25°C(77°F)Temp. Coefficient -20mV/°C	
Capacity affected by Temperature	40°C (104°F)	103%
	25°C (77°F)	100%
	0°C (32°F)	86%
Self Discharge	Leoch LPCG series batteries may be stored for up to 9 months at 25°C(77°F) and then a freshening charge is required. For higher temperatures the time interval will be shorter.	



Typical Applications

- ◆ Railway and marine systems
- ◆ Electric tools
- ◆ Vehicle in place of walking
- ◆ Lawn mowers
- ◆ Golf trolleys and golfcart
- ◆ Electric toys
- ◆ Portable power
- ◆ Wheelchairs
- ◆ Medical equipments.



Constant Current Discharge (Amperes) at 25 °C (77°F)

F.V/Time	10min	15min	20min	30min	45min	1h	2h	3h	4h	5h	6h	8h	10h	20h
1.85V/cell	42.9	37.2	33.4	26.6	20.2	16.9	10.6	7.99	6.54	5.60	4.86	3.92	3.33	1.85
1.80V/cell	51.5	42.9	38.0	29.6	22.7	18.8	11.5	8.62	7.01	5.95	5.16	4.14	3.50	1.90
1.75V/cell	59.8	48.9	42.2	32.2	24.2	19.9	12.1	9.02	7.29	6.14	5.32	4.24	3.55	1.93
1.70V/cell	66.4	53.2	45.3	34.2	25.3	20.8	12.7	9.33	7.50	6.32	5.47	4.33	3.61	1.96
1.67V/cell	71.1	55.9	47.3	35.5	26.3	21.5	13.0	9.60	7.67	6.47	5.57	4.40	3.67	1.98
1.60V/cell	77.5	59.8	50.6	37.6	27.8	22.5	13.5	9.92	7.90	6.64	5.70	4.46	3.73	2.00

Constant Power Discharge (Watts) at 25 °C (77°F)

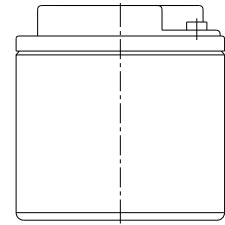
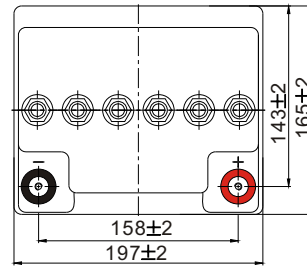
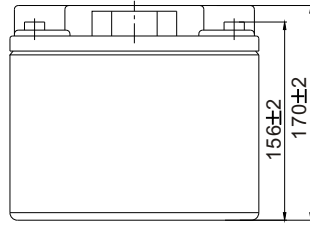
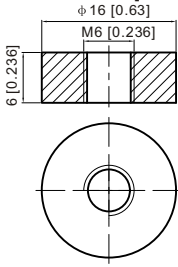
F.V/Time	10min	15min	20min	30min	45min	1h	2h	3h	4h	5h	6h	8h	10h	20h
1.85V/cell	80.6	70.3	63.8	51.1	39.2	32.8	20.7	15.6	12.8	11.0	9.62	7.79	6.62	3.70
1.80V/cell	95.4	80.1	71.6	56.3	43.7	36.3	22.4	16.8	13.7	11.7	10.2	8.19	6.95	3.79
1.75V/cell	109.0	90.1	78.8	61.0	46.3	38.3	23.4	17.5	14.2	12.0	10.5	8.38	7.05	3.84
1.70V/cell	119.3	97.1	83.8	64.2	48.1	39.8	24.4	18.1	14.6	12.3	10.7	8.55	7.16	3.90
1.67V/cell	126.3	100.9	86.7	66.2	49.7	41.0	25.0	18.6	14.9	12.6	10.9	8.67	7.27	3.94
1.60V/cell	135.2	106.4	91.8	69.4	52.1	42.7	25.8	19.1	15.3	12.9	11.1	8.78	7.37	3.97



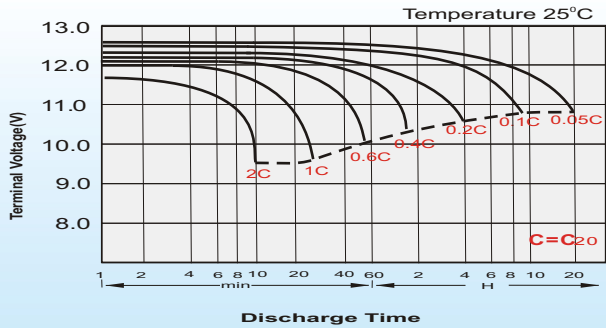
Dimensions

T6 Terminal

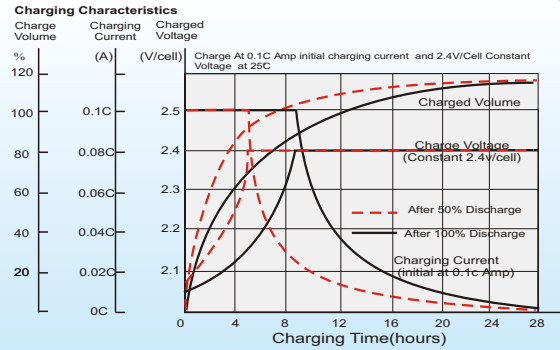
Unit: mm [inches]



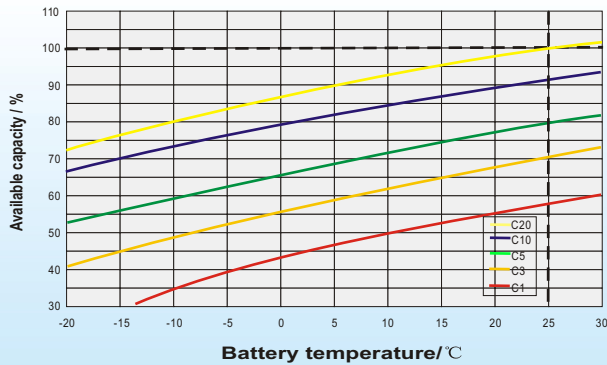
Discharge Characteristics



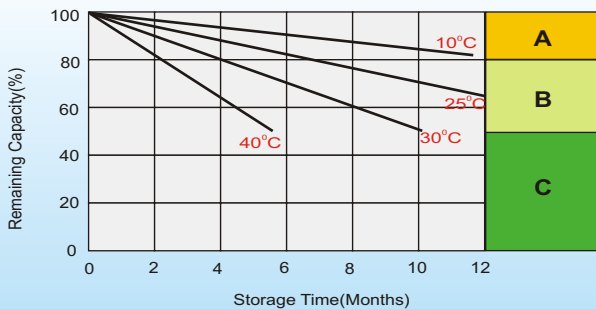
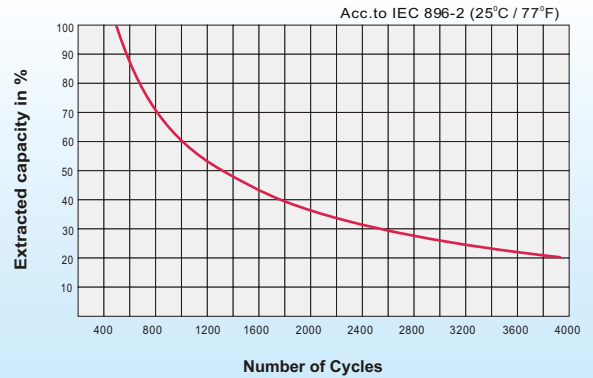
Charging Characteristics (cycle use)



Temperature Effects in Relation to Battery Capacity



Cycle Life in Relation to Depth of Discharge



Self Discharge Characteristics

A

No supplementary charge required
(Carry out supplementary charge before use if 100% capacity is required.)

B

Supplementary charge required before use. Optional charging way as below:
1. Charged for above 3 days at limited current 0.25CA and constant volatge 2.25V/cell.
2. Charged for above 20hours at limited current 0.25CA and constant volatge 2.45V/cell.
3. Charged for 8~10hours at limited current 0.05CA .

C

Supplementary charge may often fail to recover the capacity.
The battery should never be left standing till this is reached.

Sales Office

China sales office:

Add: 5th Floor, Xinbaohui Bldg., Nanhai Blvd.,
Nanshan, Shenzhen, China. 518052
Tel: +86-755-86036060 (100 lines)
Fax: +86-755-26067269
E-mail: export@leoch.com
Http://www.leoch.com

HongKong sales office:

Add: Workshop C, 33/F, TML Tower,
No. 3 Hoi Shing Road, Tsuen Wan,
New Territories, Hong Kong
Tel: +852 35786666
Fax: +852 21170016
E-mail: sales.hk@leoch.com

Singapore sales office:

Add: No. 1 Tech Park Crescent,
Singapore 638131
Tel: +65 68416629
Fax: +65 68443210
Email: sales.sg@leoch.com

North America sales office:

Add: 19751 Descartes, Unit A,
Foothill Ranch, CA 92610, USA
Tel: 949-588-5853
Fax: 949-588-5966
E-mail: sales@leoch.us
Http://www.leoch.com

Europe sales office:

Add: 9B Wheatstone Court, Waterwells
Business Park, Gloucester, GL2-2AQ,
UK United Kingdom
Tel: +44(0) 1452 729428 / 1452 729696
Fax: +44 (0)1452-690125
E-mail: Sales.Europe@leoch.com